

ISTANBUL

WAKE UP TO
SWISS HOSPITALITY
AND PANORAMIC VIEWS
OF THE MODERN YET ANCIENT
CITY OF ISTANBUL.

Swissôtel The Bosphorus, Istanbul

Visnezade Mah, Acisu Sok. No 19 Macka, Besiktas 34357 Istanbul, Turkey
Tel +90 212 326 1100 Fax +90 212 326 1122
istanbul@swissotel.com www.swissotel.com/istanbul

swissôtel **THE BOSPHORUS**
ISTANBUL

LOCATION

SWISS HOSPITALITY IN THE HEART OF THE BOSPHORUS
Located in the heart of Istanbul, Swissôtel The Bosphorus offers panoramic views of this modern yet ancient city. Nestled on the European Banks of the Bosphorus, you can truly unwind in the tranquillity of our 65 acres of historical gardens and enjoy cityscapes from our rooftop infinity pool. Perfectly located for business and leisure, take time to explore the cultural capital of Turkey or indulge in some retail therapy. Awarded the Safe Hotels Executive Level Certificate for 2016 – 2017, our Swiss-contemporary elegance and welcoming Turkish service will make it a stay to remember.



GUEST ROOMS

CONTEMPORARY URBAN LIVING WITH A VIEW

Ease into one of our 566 contemporary rooms. Wake up to panoramic views of the minarets, the Golden Horn or the Bosphorus skyline in five-star comfort. Enjoy city vistas from one of our 30 exclusive suites or live like a local in one of our spacious residences. Experience urban living with sweeping views across the old town, the Bosphorus and the Asian landmass in our two-storey lofts.

RESTAURANTS & BARS

FINEST CUISINE IN ISTANBUL / SKYLINE DINING

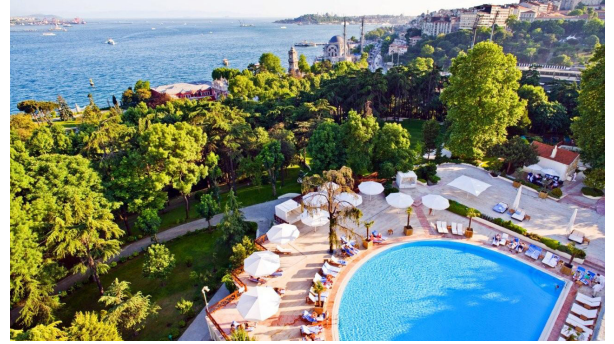
Seven on site eateries satisfy any appetite and offer everything from fine dining through to light bites. Embrace the sounds and sights of Istanbul in our exclusive Gaja Roof Restaurant and Sky Bar. With stunning views by day and night, you can meet, celebrate or simply pass the time with our cocktail and world cuisine menu. Relax and unwind in our Les Ambassadeurs Bar or the Lobby Lounge. Those seeking an Alpine experience should visit our Chalet Restaurant. For a more relaxed dining experience head to Café Swiss; where you have tastes from Turkish and World Cuisine. Your daily escape for coffee and snacks Swiss Gourmet will be the correct spot.



PÜROVEL SPA & SPORT

TIME TO UNWIND

Escape the city life and head to our Swiss-inspired spa and sport facilities situated in our expansive landscaped gardens. Why not treat yourself to a therapeutic beauty treatment in one of our treatment rooms or unwind in our hydrotherapy room, relaxation lounge or salt pool. The on-site Vita Parkour in Sultan Park and private group exercise classes are also a must-have for those looking for invigorating sessions. After training, you can stop by Energia and have a fresh smoothie to freshen up.



CONFERENCES, MEETINGS & EVENTS

A MEMORABLE PLACE TO MEET

The panoramic views make Swissôtel The Bosphorus, Istanbul; a vibrant place for any business or social event. With 5,900 square metres of multifunctional and ergonomically meeting spaces including the latest easy-to-use technology equipment, our 25 functions rooms and three ballrooms offer intelligently designed spaces for meetings, events and functions of all sizes. Overlooking the Dolmabahçe Palace, the Fuji Ballroom caters for up to 1,600 guests. Our pro-active and passionate colleagues work effortlessly to guarantee you a memorable experience.



FACILITIES & SERVICES

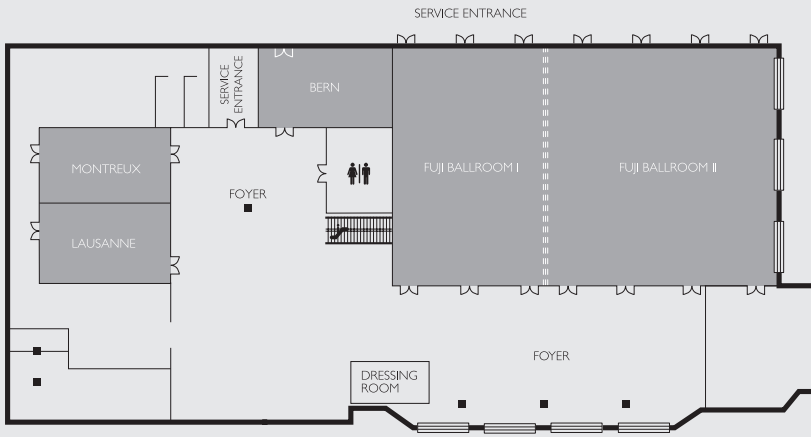
SWISSÔTEL THE BOSPHORUS, ISTANBUL

- Centrally located 5-star hotel
- 566 contemporary rooms, suites, apartments and loft-living
- 30 minute drive from Ataturk International airport
- Airport transfers using our hotel's exclusive limousine service
- 7 in-house restaurants and bars offering finest world-cuisine
- Professional conference, meeting and event facilities spanning a total of 5,900 square metres
- Wireless internet
- Pürovel Spa & Sport centre, indoor and outdoor pool
- 24-hour in room dining
- 24-hour concierge service
- Car park with 285 parking lots

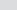






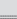
CAPACITY CHART

MEETING ROOMS	AREA FT²	AREA M²	L	W	H	THEATRE	CLASS ROOM	BOARD ROOM	U- SHAPE	H- SQUARE	CABARET	BANQUET	DINNER & DANCE	COCKTAIL PRO	RECEPTION
FLOOR 5															
Fuji I+II	11513	1070	43	25	7	1600	1000	164	200	260	378	1008	952	1000	1200
Fuji I	4557	425	17	25	7	420	300	90	100	140	150	360	288	250	400
Fuji II	6940	645	28	25	7	650	500	110	130	160	228	576	480	400	750
Foyer	3938	366	32	11	4	-	-	-	-	-	-	-	-	400	650
Bern	1043	97	13	7	3	120	63	50	45	50	42	84	60	50	90
Montreux	1043	97	13	7	3	120	63	50	45	50	42	84	60	50	90
Lausanne	1043	97	13	7	3	120	63	-	45	50	42	84	60	50	90
Foyer	2410	224	16	14	3	-	-	-	-	-	-	-	-	100	120
FLOOR 7															
Neuchatel	3841	357	18	20	4	420	280	66	100	115	150	324	276	250	400
Neuchatel Foyer	2130	198	14	16	4	-	-	-	-	-	-	-	-	150	275
Geneve - Luzern	3421	318	24	13	5	400	186	50	60	70	120	288	240	225	300
Geneve	2130	198	15	13	4	250	133	50	60	70	72	168	108	100	160
Luzern	1237	115	13	8	4	120	63	50	45	50	36	84	60	50	90
Zurich	1172	113	8	13	3	120	63	50	45	50	42	84	60	50	90
Foyer	2259	210	30	7	3	-	-	-	-	-	-	-	-	200	325
Asuka	5616	522	23	23	4	470	398	54	70	85	320	480	408	330	400
Asuka Foyer	2162	201	30	7	2	-	-	-	-	-	-	-	-	150	200
FLOOR 10															
Monte Rosa 1+2	1495	139	8	16	3	115	75	30	35	42	48	96	-	90	110
Monte Rosa 1	484	45	5	8	3	40	18	22	18	22	18	36	-	-	40
Monte Rosa 2	753	70	8	8	3	60	36	22	27	34	30	60	-	40	60
Mönch	785	73	6	11	3	70	51	30	35	42	30	60	-	40	60
Mont Blanc	879	82	7	11	3	80	54	30	35	42	36	72	-	40	70
Eiger	409	38	5	7	3	-	-	11	-	-	-	-	-	-	-
Matterhorn	409	38	5	7	3	-	-	11	-	-	-	-	-	-	-
Jungfrau	409	38	5	7	3	-	-	11	-	-	-	-	-	-	-
Chamonix	352	34	4	9	3	-	-	9	-	-	-	-	-	-	-
SWISSÔTEL LIVING MEETING FLOOR															
Mimosa	1151	107	15	7	3	85	81	32	36	42	48	84	60	70	100
Eidelweiss	882	82	12	7	3	70	44	26	27	30	30	60	-	40	70
Acacia	376	35	7	5	3	-	-	13	-	-	-	-	-	-	-
Tulip	312	29	4	7	3	-	-	9	-	-	-	-	-	-	-

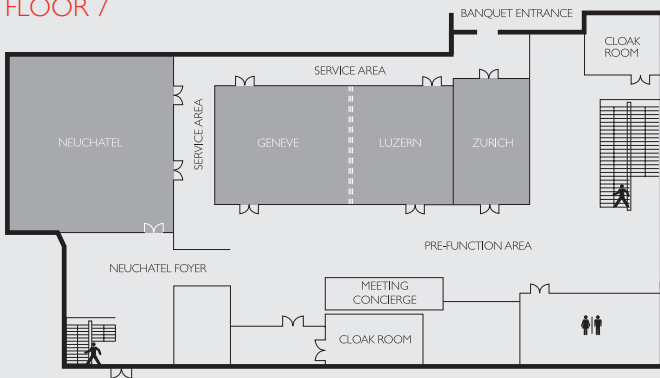
FLOOR 5



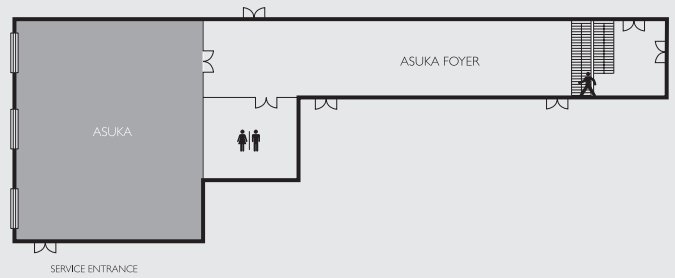
LEGEND

- | | |
|---|--------------------------|
|  | Meeting Room or Ballroom |
|  | Restrooms |
|  | Elevator |
|  | Food & Beverage Outlet |
|  | Emergency Exit |
|  | Stairway |
|  | Window |
|  | Moveable Partition |

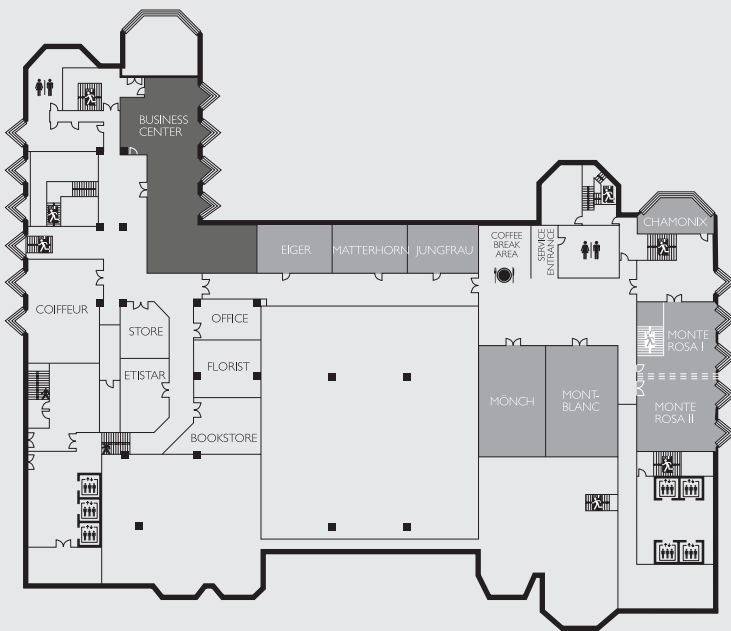
FLOOR 7



FLOOR 7 (UNDER FLOOR 9 LOBBY)



FLOOR 10



SWISSÔTEL LIVING MEETING FLOOR

